

Agenda



-
- Introduction Charlie Sartain, Chief Executive Officer
 - Markets Andrew Greville, GM Commercial
 - Operations
 - North Queensland Barry Grant, COO North Queensland
 - Minera Alumbrera Jon Evans, GM Minera Alumbrera
 - Projects Peter Forrestal, GM Project Development
 - Finance, Business Development Louis Irvine, Chief Financial Officer
 - Closing Charlie Sartain, Chief Executive Officer

North Queensland



- Overview
- Divisional Business Strategy
- Performance and Outlook
 - Safety
 - Environment
 - Community
 - Human Resources
 - Operations
- Operational Excellence
- NPV Improvements

North Queensland, Australia



- 3,000 employees
- Mount Isa
 - Two underground copper mines X41, Enterprise (1,800m deep)
 - Concentrator, smelter
 - 600,000 tpa copper concentrate
 - 240,000 tpa copper anode
- Ernest Henry Mining Pty Ltd
 - Open pit
 - 400,000 tpa copper concentrate
- Townsville copper refinery and port facilities
 - 280,000 tpa capacity copper cathode
 - ISA PROCESS



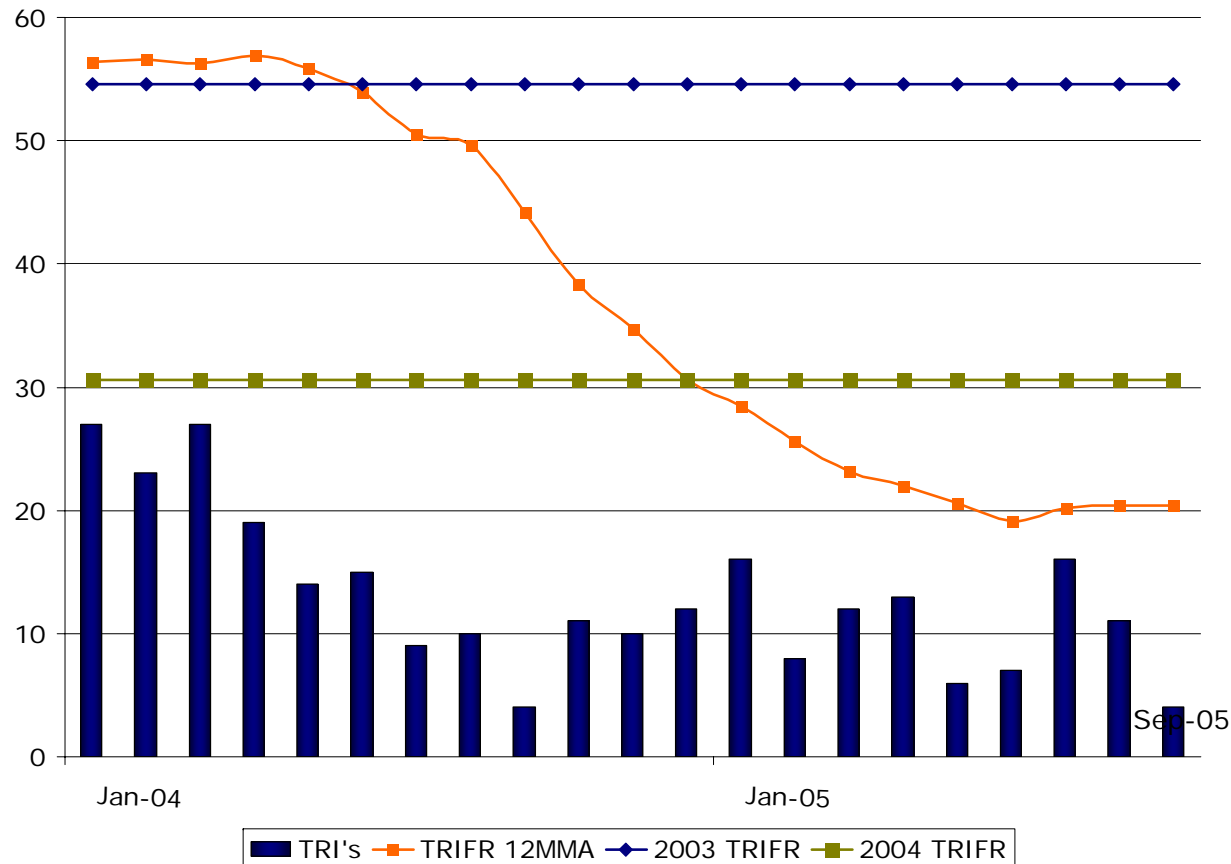
NQ business strategy

Value maximisation through:

- Optimised cost profiles and maximised metal production – H1 costs at 300kt pa integrated, sustainable copper production
- Ongoing extensions to mine lives
- Regional leverage – ore discoveries, partnerships, project development

Safety improvements

NQ Total Recordable Injury Frequency Rate
January 2004 to September 2005





Environment and community

Environment

- Environmental Management System - ISO 14001 compliance
- Greenhouse challenge
- Energy & water management improvements
- Closure design criteria review
- Progressive improvements for Smelter SO₂ capture through 80% to 95%

Community

- Three year \$4 million community program involving Mount Isa, Cloncurry, Townsville and Bowen
- Initiatives in six key Corporate Social Involvement areas:
 - social and community
 - health
 - enterprise and job creation
 - culture and art
 - education
 - environment

Human resources

Our approach is working

- Attract and retain – NQ turnover down to 11% annualised compared to 25% in 2004 (industry rate of +25%)
- Developing our own talent

Apprentice Program

School-based initiatives

Vacation Program

Scholarship Program

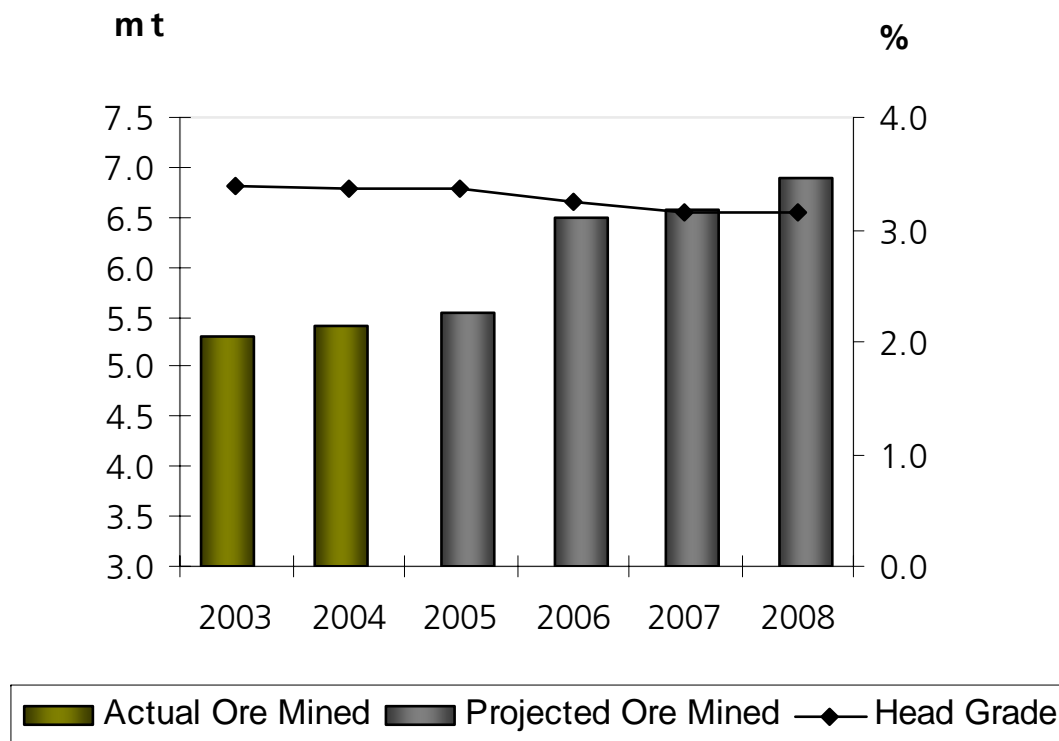
Pathways programs

Graduate Program



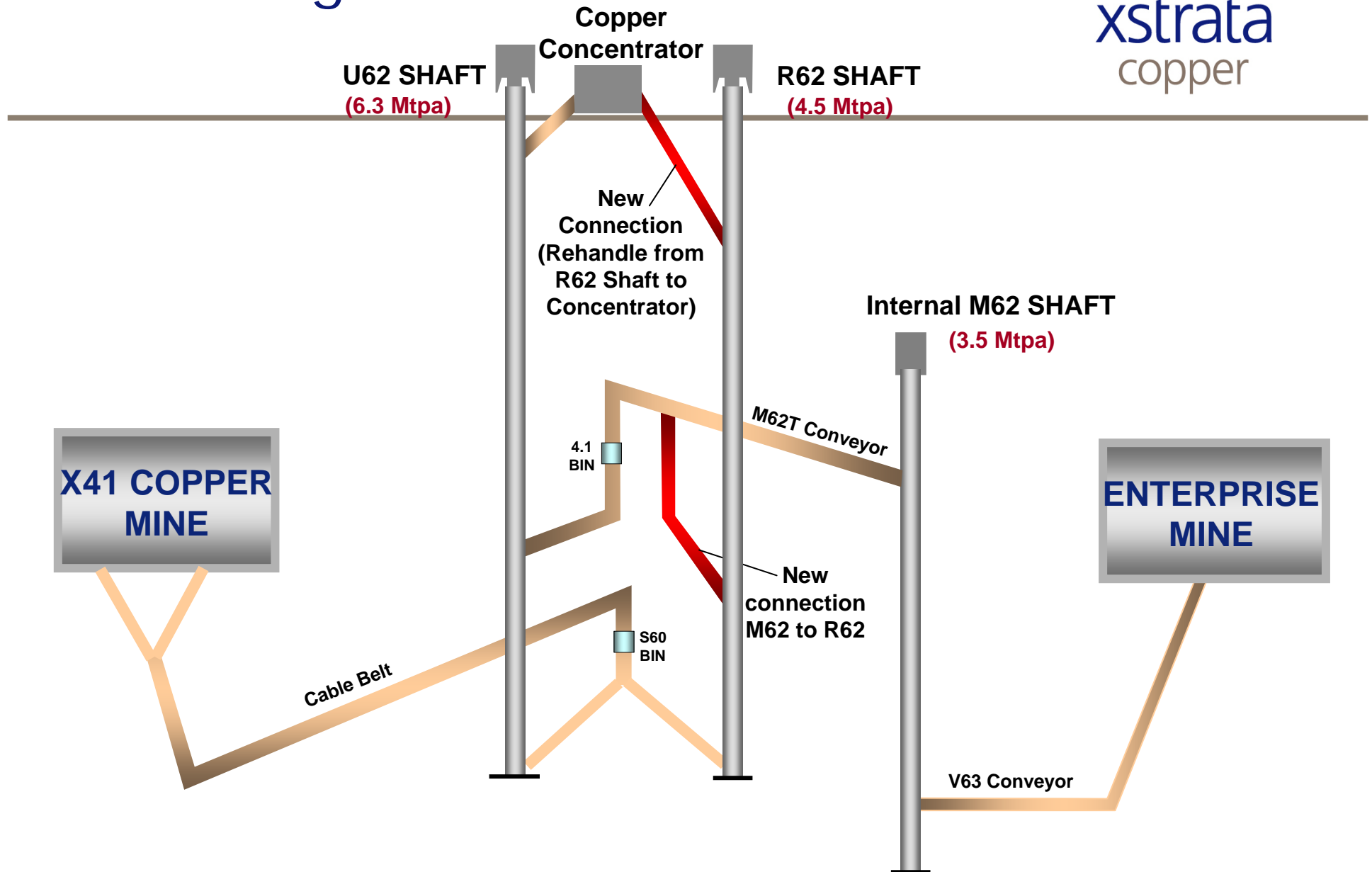
Operational performance

Isa Ore Mined & Head Grades - trends



- Rebuilding of mine production capacities
- Future strategic advantage of Isa lead mine closing – increased copper hoisting capacities
- December 2004 underground ore rate 6.1mtpa (annualised rate)
- H1 2005 – impact of planned maintenance
- Annualised rate now >6mtpa

Hoisting

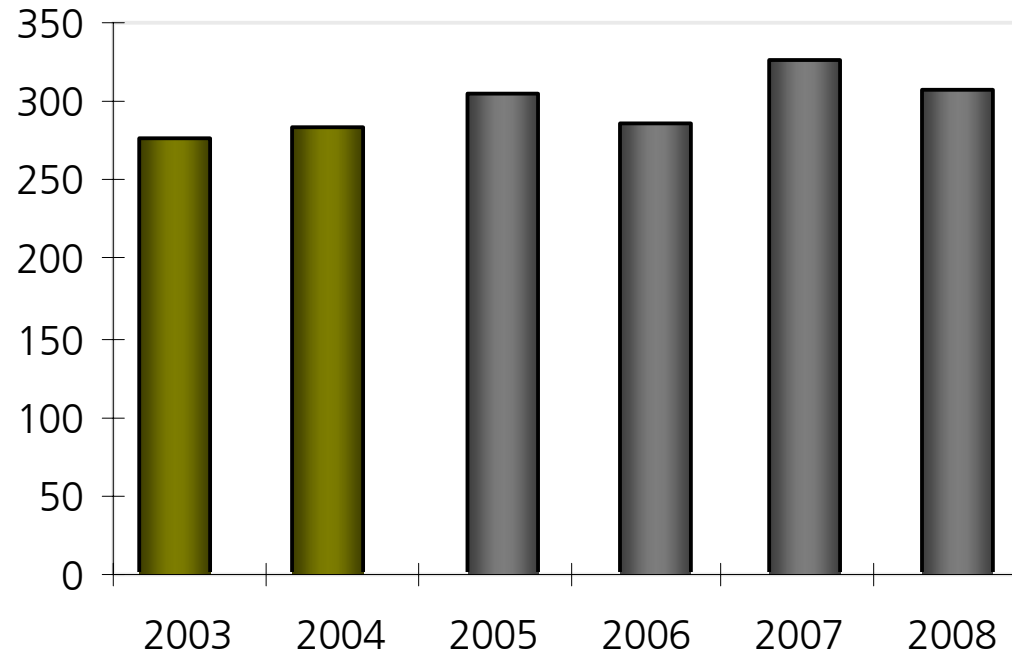


Operational performance

Record copper-in-concentrate production...

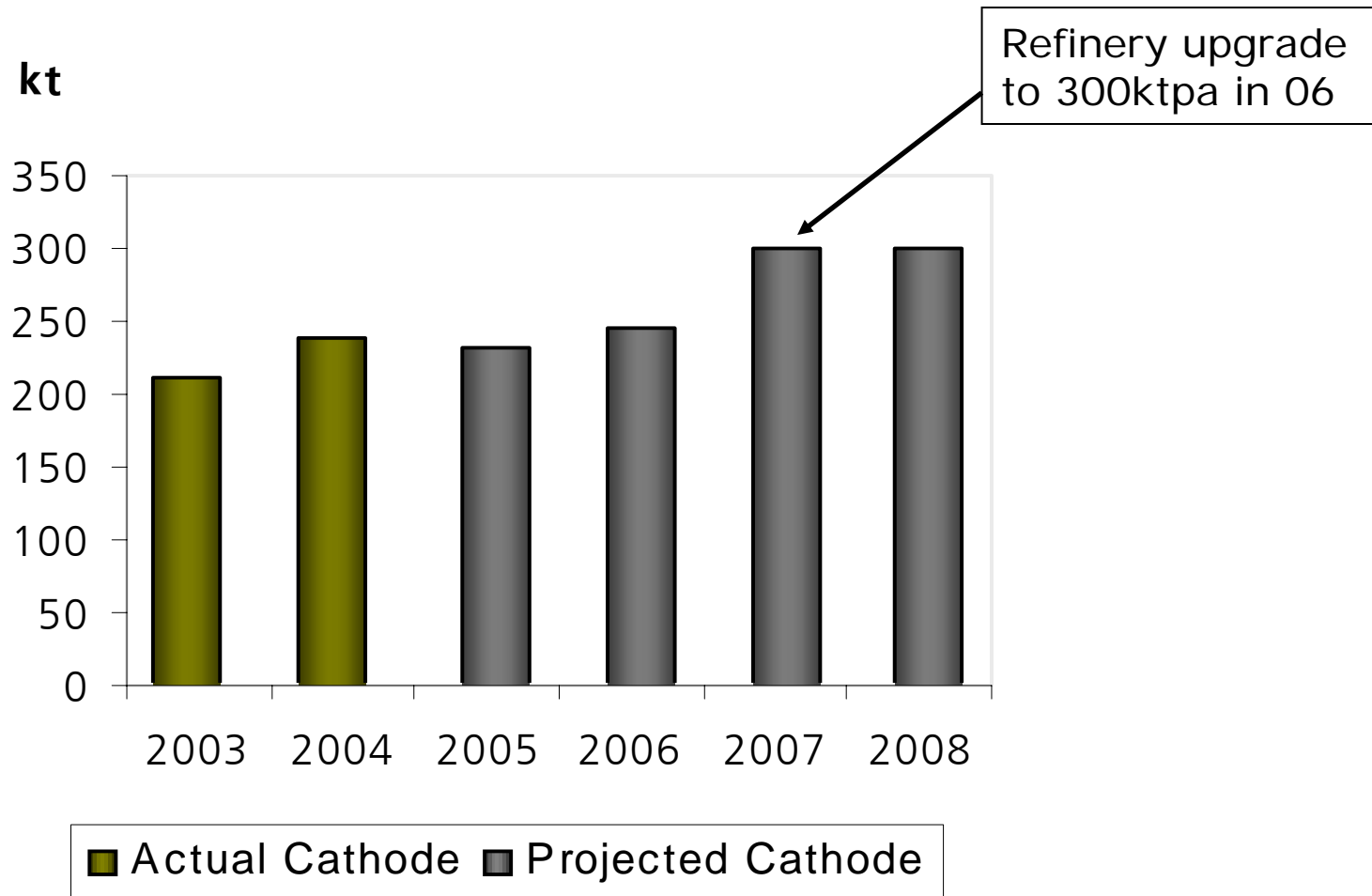


kt



■ Actual Cu in Concentrate ■ Projected Cu in Concentrate

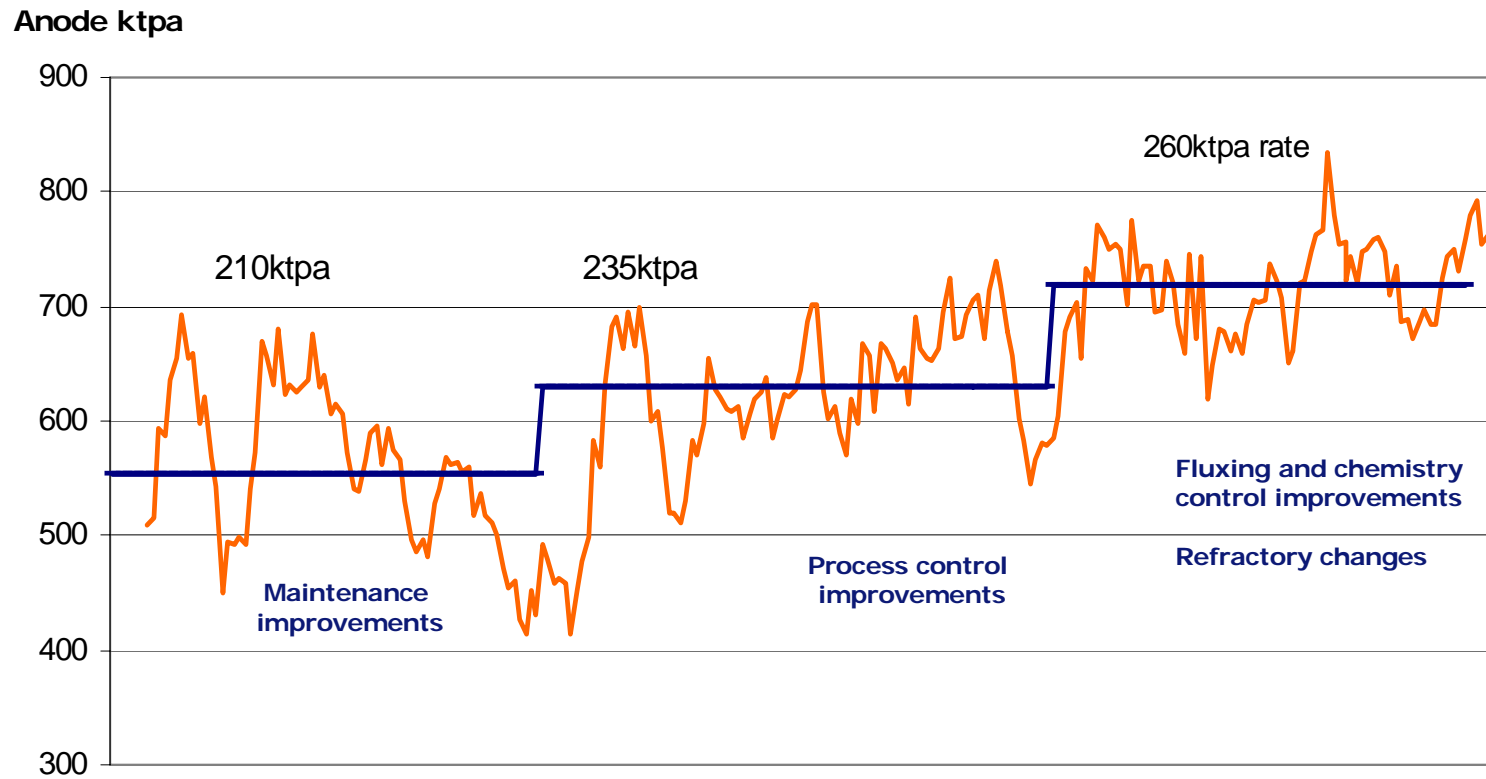
Operational performance with copper cathode production increasing ...



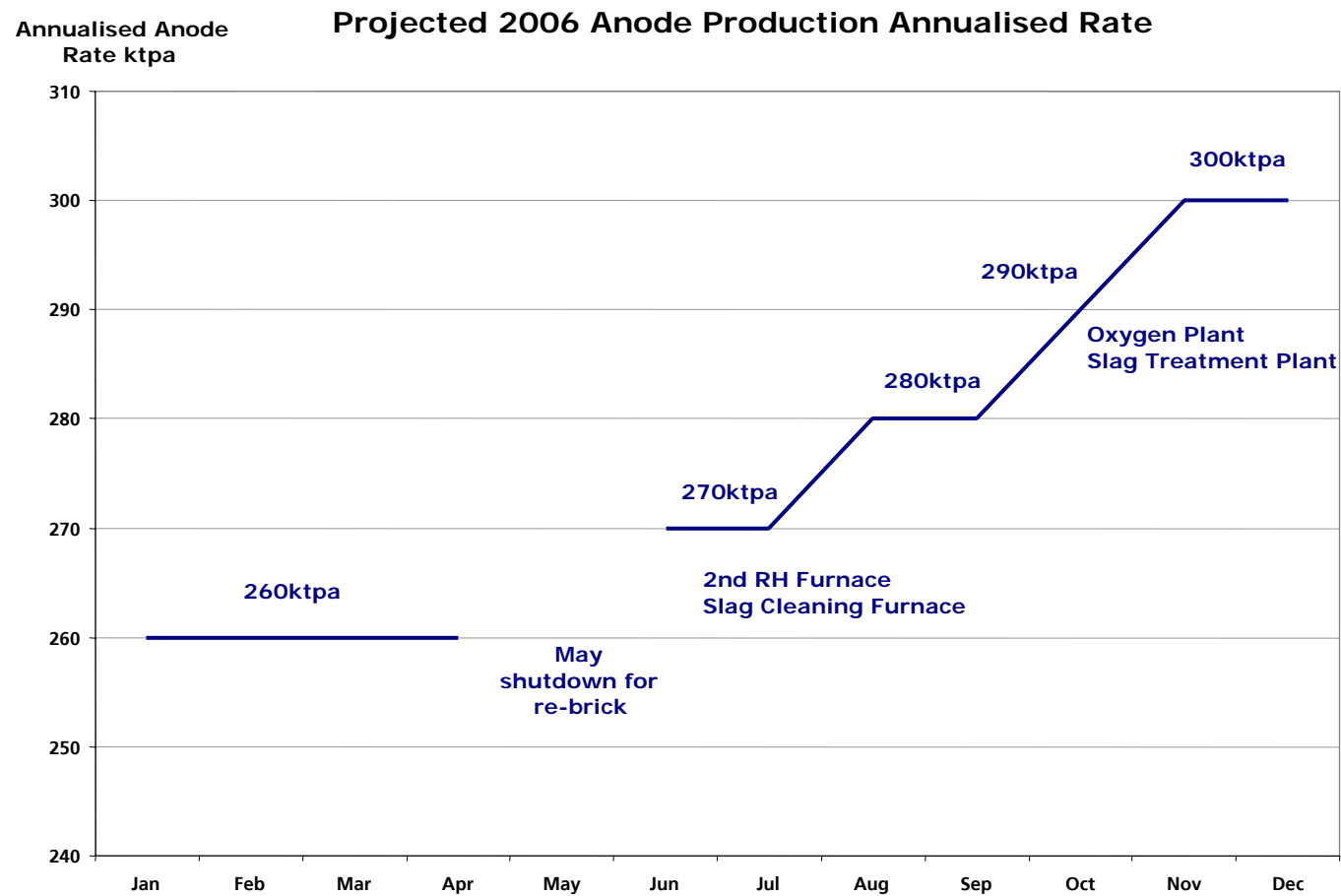
Operational performance ...due to converter operating improvements



2005 Rolling 7 day average



Capital enhancement program



Operational excellence

Ernest Henry

- Pit wall steepening - reduction of 110mt waste mined
- Improved metallurgical recoveries - new reagent suite
 - Gold recovery increased from 70.5% to 74.5%
 - Copper recovery increased from 92.5% to 93%
 - Annualised EBIT impact of >US\$7.5m, based on current average prices
- Record copper and gold output in 2005

Mount Isa

- Enterprise mine production > 3mt in 2005
- Record monthly Copper Smelter output >23kt in August (average 20kt in 2004)

Effective cost management

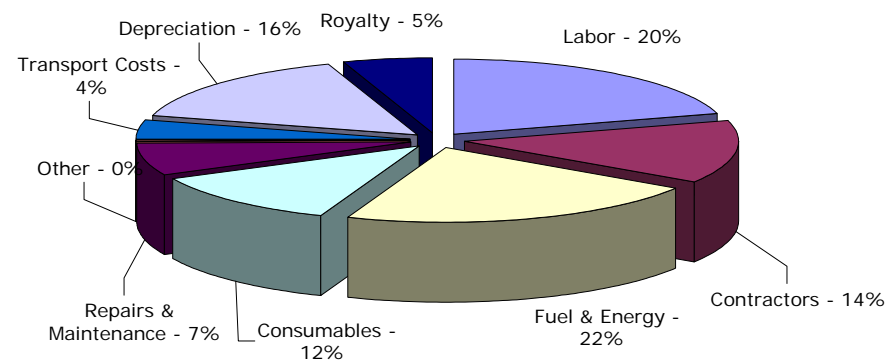
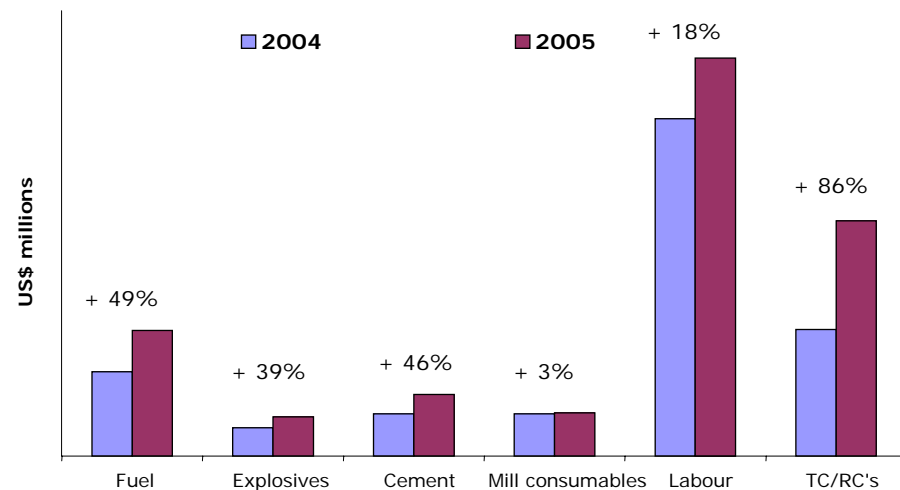
The impact of operating in an increasing cost environment for mining...

Offset by

- Optimisation and improvement programs >US\$ 10m
- Higher copper production >US\$ 19m
- Stronger copper and gold prices >US\$ 230m

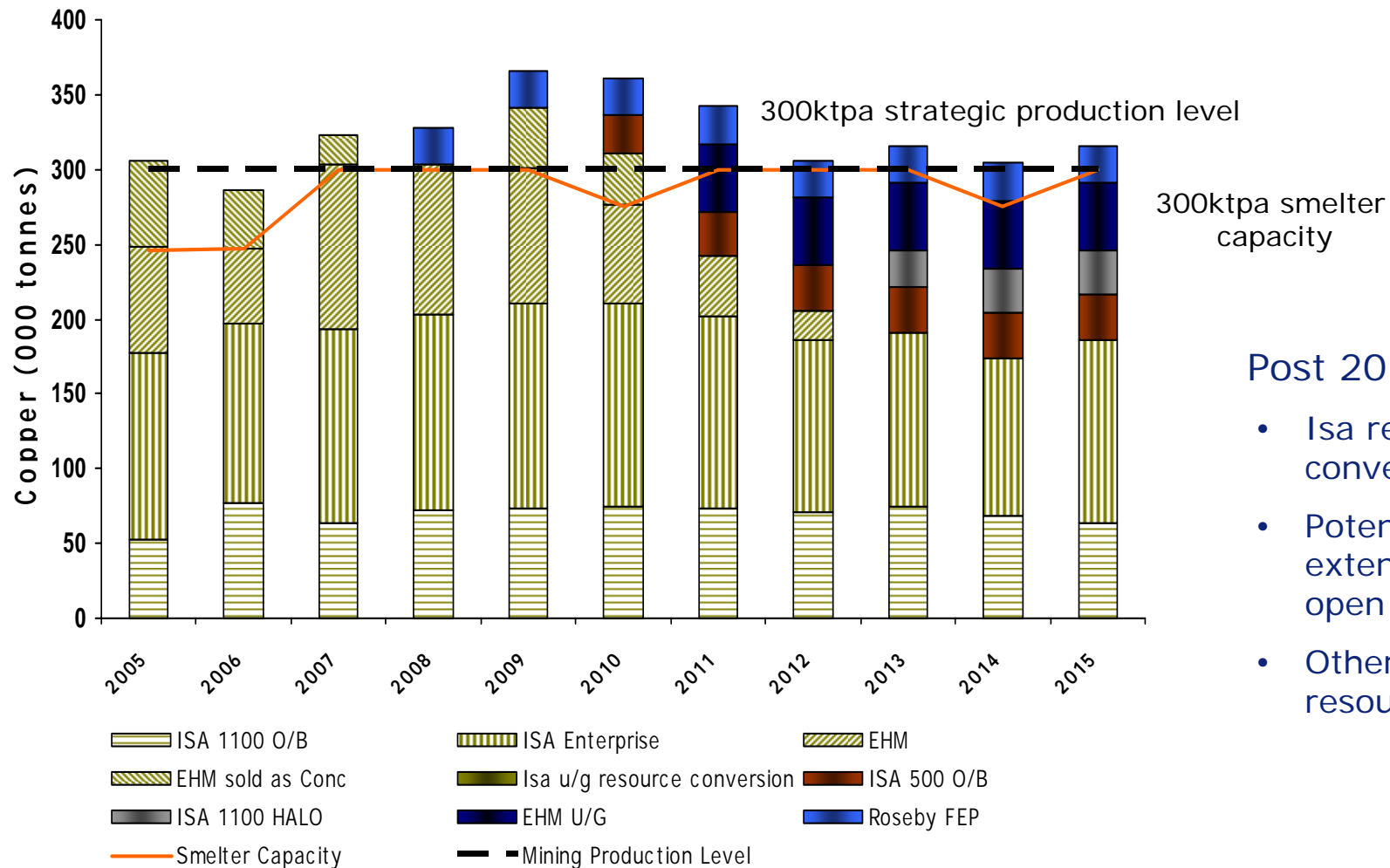
Total Unit Cost

Increasing cost environment - North Queensland



NPV Improvements

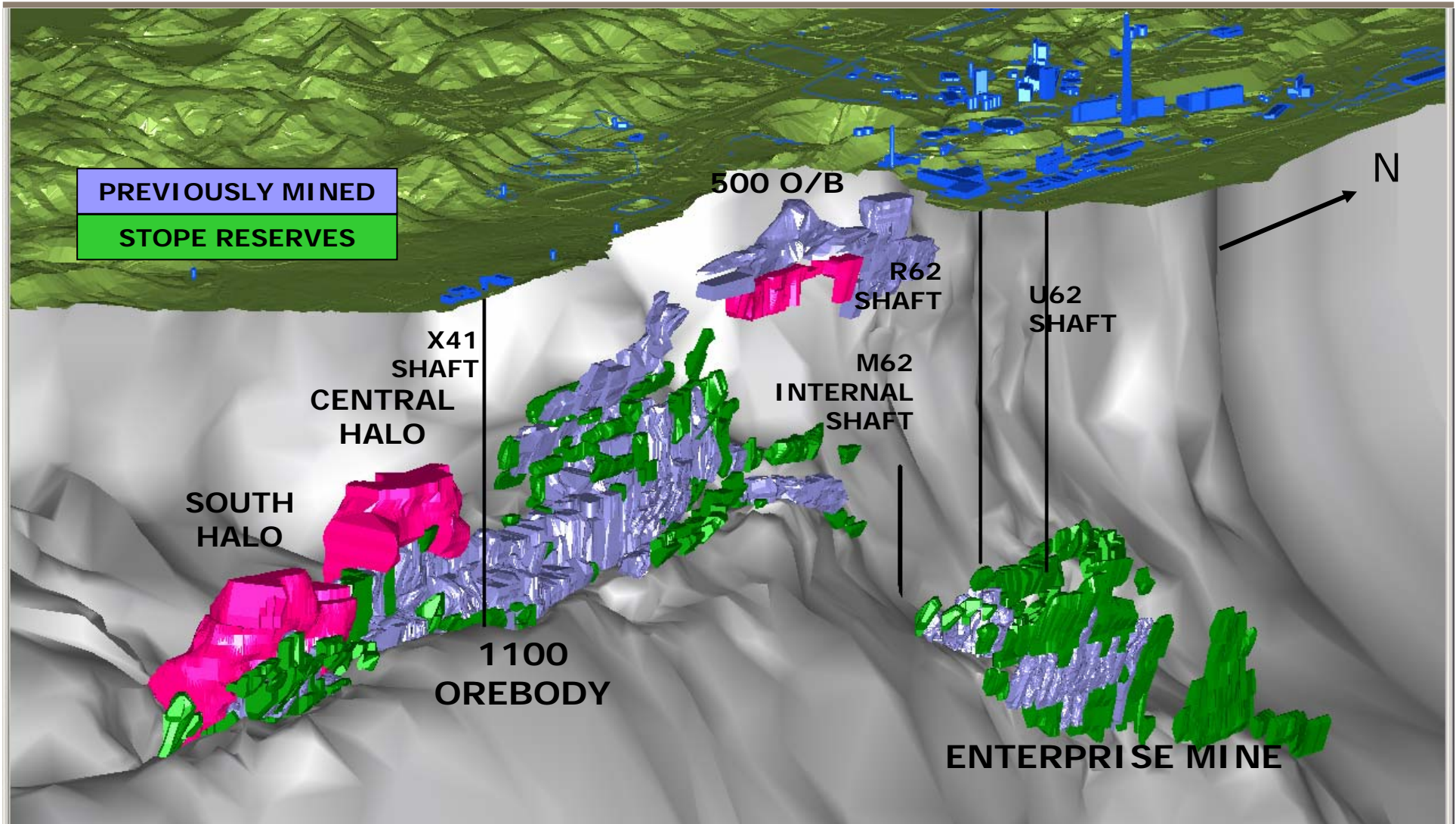
.. working towards the strategic targets



Post 2015

- Isa resource conversion
- Potential extension of open pit
- Other district resources

Isa underground Further resource potential



NPV Improvements

Extensions to mine lives



Isa Underground

- Expected 15mt additional ore Reserves – 2005
- Ongoing program of resource conversion to extend mine life
- 500 orebody project – potential for +30mt Resources at 2.5+% copper
- 1100 orebody halo project – Resource potential of +100mt at 1.1% copper

EHM

- 10mt added to ore Reserves in 2004
- Potential for 70mt underground Resources at 1.4% copper equivalent

Summary NQ Division



- Record copper-in-concentrate production in 2005
 > 300kt
- Strategic sustainable production target of 300ktpa copper
- Ongoing operating and capital enhancements
- Cost reduction focus
- Continuing extensions to Ore Reserve base